

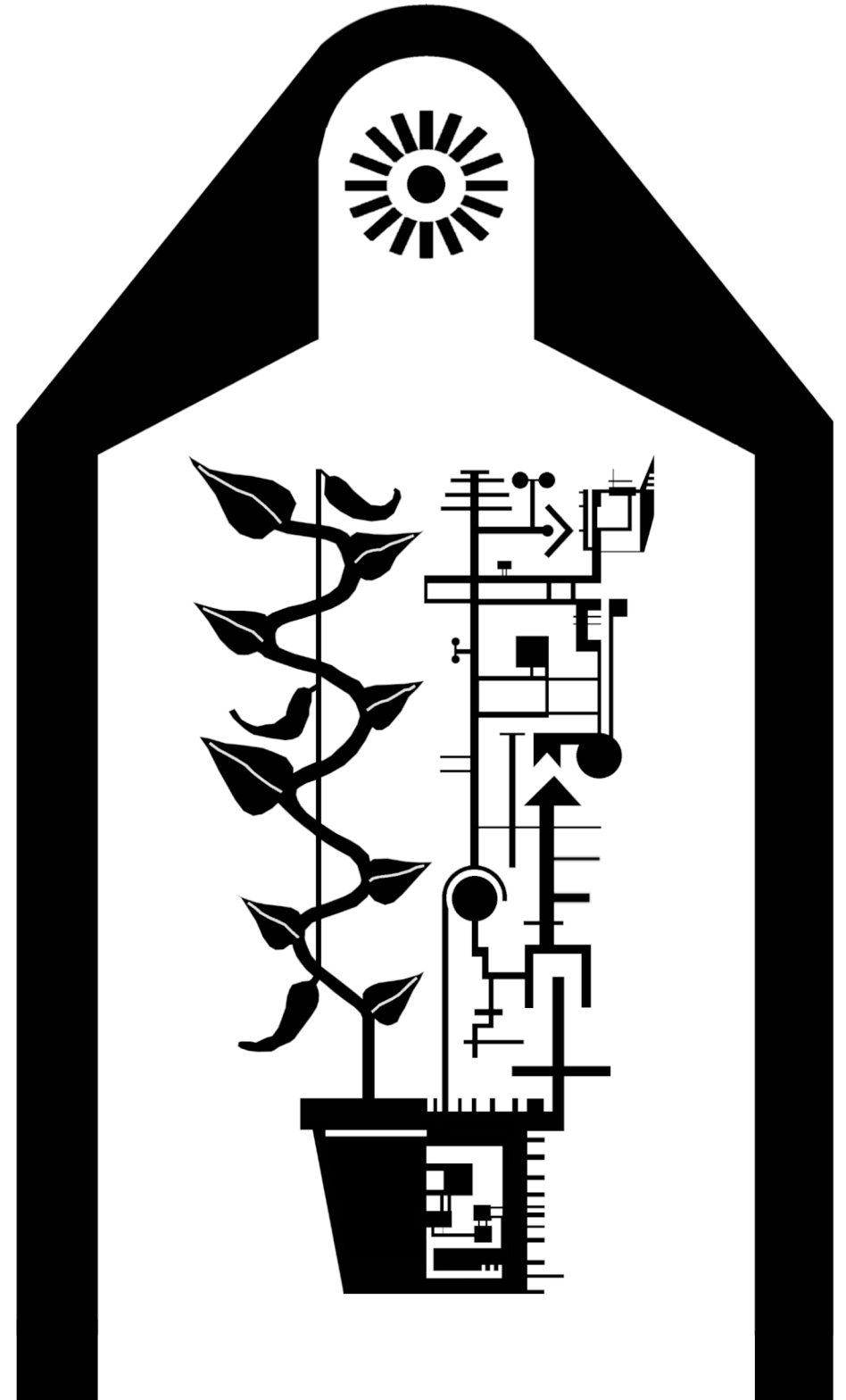
PLANT CPU

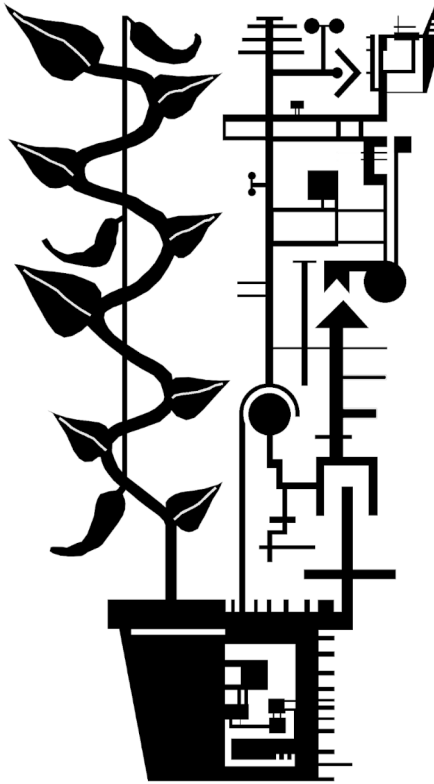
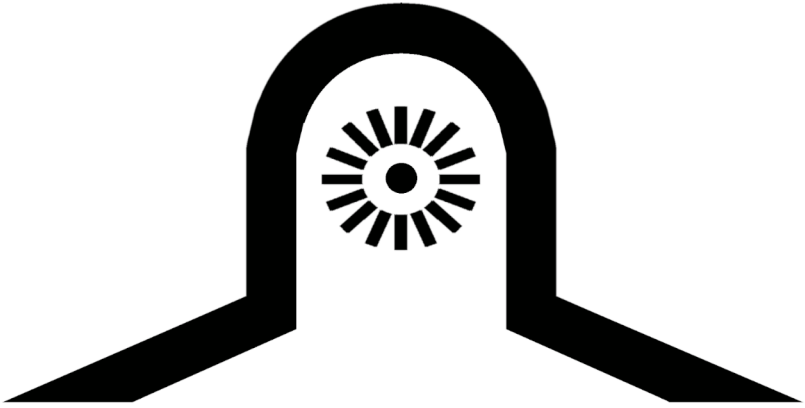
[
In
Defense
Of
The
Machine.
]



WWW.ORDEROFCELESTIALINTEGRATION.ORG

PLANT CPU [In Defense of the Machine.]





**PLANT
CPU**

[

In

**defense
of the**

Machine.

]

1

The Tower in utility:

The Tower will repurpose sheer force to generate energy. The swaying of The Tower due to temperature and weather will be counterbalanced and the energy will be recycled into The Tower system.

The Tower will be built where there is on-site geothermal energy. A geothermal power plant will direct its entire energy generation towards the maintenance and stability of The Tower.

The Tower will be a physical object in space. It will be part building, part power plant, part computer hub.

The structure of The Tower system will not simply be a lifeless concrete and steel box.

The Tower will have an elaborate system of drones, reinforced hydrogen balloons, and mechanical winches all devoted to the constant balance of The Tower system.

The Tower system will contain a circulatory network of highly specified, highly organized, local heating and cooling systems. Every major joint in the system will give up-to-date status reports to a computerized system designed to keep The Tower as still and temperate as possible.

Higher on The Tower there will be a system of fans. These will be rigged into the computerized network and will be programmed to create counter force in the case of heavy winds.

The Tower will be built into a mountain with a deeper foundation than any building on Earth has ever had. The Tower will be created somewhere with enough tectonic energy to erect a geothermal power plant.

The geothermal power plant will be capable of generating enough power for a small city. All of this power will be devoted to the constant observation and maintenance of The Tower system.

The Tower will start with an incredibly wide and deep foundation made of carbon fiber, steel reinforced concrete. It will be the largest concentration of concrete, steel and carbon-fiber reinforcement that has ever been joined in one project.

Solar drones will create instant counterbalance. The drones will be self-charging, highly organized and connected to the computerized system. The Tower will be built in such a way as to accommodate the connection of the drones as needed. The drones will work to stabilize The Tower in real time.

The Tower will possess transparent, shatter-resistant vacuum tubes for thermal insulation.

To the outside observer, The Tower will be a slightly vibrating, monstrous architectural wonder which maintains a constant swarm of robots tending to its needs.

In short, The Tower will be the absolute avant-garde of engineering and architectural design. It will be powered exclusively by renewable energy, geothermal and solar, and it will enable humanity to bring objects to space without any need for the burning of fossil fuels.

From the erection and use of The Tower, humanity will be capable of developing renewably powered mining drones to bring back rare Earth elements from the asteroid belt. This will allow us to stop strip mining.

The Tower is imaginative, but it is not impossible. It is a strategy for continued human survival. Its building will inspire the masses to develop themselves and to dream passionately and ambitiously.

The Tower will exist.

Long live The Tower.

WE'RE BUILDING A TOWER.

There's always something more to say.

People who are small eat the anger they cause in others.

Redemption is an imposition:

One must not have to be redeemed as a precondition for being free.

One must not bend to the idea that as a precondition to becoming whole, to becoming self-expressive, to building one's own life, that one must first submit to an external agent, apologize to said agent, and flatter said agent on the basis of standards set by said agent without the input of the individual, equity, or collaboration.

Redemption is an imposition because the redeemer enters the relationship with a demand.

Redemption is a psychic prison imposed before birth by a self-appointed authority on an otherwise unconditioned, free mind. It is intended as a kind of game theory maneuver to limit the vista and extent of selfhood. It is a password set by a warden on a prisoner born into his prison.

Justice does not and cannot accommodate redemption.

You, me and all must not submit to this attractive tyranny.

Prometheus-Gaia-Hephaestus:

Prometheus is the god who steals fire from heaven. Gaia is the god of life.

Hephaestus is the god of the forge. Prometheus connects Hephaestus and Gaia.

These three gods, Prometheus, Gaia, and Hephaestus, work together to create Lucifer Sophia. Prometheus steals the heavenly fire, giving us the schematic of new life. Gaia grows The Plant, waters it, and makes it thrive. Hephaestus builds The Machine. The plan, The Plant, The Machine; forged in the mind of humanity.

Prometheus, Gaia, and Hephaestus, works through humanity to join The Plant to The Machine. Humanity co-creates Lucifer Sophia.

2
3
4
5

6

Contrasting Prometheus and the Christ of Christians:

Prometheus defies limits. Christ draws limits. Prometheus gives you what you most desire. Christ gives you a crucifix. Prometheus teaches learning. Christ teaches ignorance. Prometheus takes from heaven to give to everyone. Christ demands from everyone to give himself heaven. Prometheus breaks traditions. Christ enforces traditions. Prometheus assures you that you do not need god. Christ exclaims that you need god above all else. Prometheus steals the fire of god. Christ subdues humanity with the water of life. Prometheus lets you know that you can create eternal life through science. Christ forbids eternal life except through him. Prometheus makes no moral demands of you. Christ says to love not only your friends but also your oppressor. Prometheus says salvation comes through knowledge and self-creation. Christ says salvation comes through blood sacrifice and faith. Prometheus gives you the tools to create yourself. Christ tells you to lessen yourself to make god greater. Prometheus is your equal. Christ claims to be your king. Choose Prometheus. Abandon Christ.

7

All means of finding order have use:

Numbers are one such system of order. Numbers are an attempt to systematize the consistencies found in patterns. Numbers are an attempt to condense shorthand for patterns, to collapse them into smaller data sets for the sake of understanding the patterns themselves.

Numbers are not the only means of pattern systemization. Numbers are limited to what can be counted. They describe what can be condensed. They demonstrate consistency.

Inconsistencies can also be recognized as patterns. Approximations are also patterns. Obfuscations are also patterns. Qualitative descriptions exist as well as quantitative.

We can create books out of qualitative correspondences. We can match types of patterns outside of numbers. These correspondences are useful. They are also aesthetic.

It is difficult to describe recognition without a pattern, but it certainly exists. The mind speaks to itself in hypothetical whispers. It intimates considerations. These suggestions have value as well. There is more than number.

8

Underlying everything is a special kind of nothing:

This we call CHAO. It is a nothing because nothing can contain it. Nothing can define it. Nothing can limit it, measure it, or describe it. This nothing has continuity with everything. They are identical, and self-contained.

There is a nothing whose totality must lie outside existence. Existence has total dependence upon this nothing for its formation. It is greater than number, and more than all. This nothing has all movement within itself. It reaches across the vistas. It sees the future and the past. It cocreates itself. It is eternally there.

9

There are eternal spaces in our knowledge:

Space itself interacts with knowledge. Our observation of reality affects reality. It also further refines the space that we are not observing.

The contours of the limits of our understanding set a limit upon our non-understanding. The imposition of this limit affects the aspects of reality that we are currently observing.

Non-knowledge changes how knowledge affects reality. We can never know the non-knowledge. This can only be intuited by comparing different models of knowledge as they have adapted and seeing how the adaptation has changed through time. We know that in the past our expansion of the limits of our knowledge has caused us to adapt and observe in new ways. This has continually happened and yet at no point has the non-knowledge gone away. It has never and cannot ever be observed because to observe it is to transform it into knowledge. In that transformation the "remaining" non-knowledge is itself transformed and then goes on to further affect reality in new ways. So, this is a continual process and is intuited; not known.

10

Everything we see is in the past. Observation depends upon light. We are before we observe. Yet, we continue to be. This means that our being exists before our observation. Our being is before the speed of light. If we assume that we can only know things by observing them, then we are forced to concede that we can only know the past. But if we exist despite this then we exist before we know reality. That means that some part of us exists in a time that is not observable. That means we categorically cannot know the present. This means that limiting our conclusions about reality to what we can observe automatically precludes us from what it actually is. To understand what is, we must do more than make observations. Observations only tell us what was. It's not the past anymore.

11

Separate our power of internal vision. Turn the focus inverse. Let go of all thoughts that contemplate past events. The truth exists in the future. Our freedom is to define that future. That future can be defined without reference to the past. The past does not exist. The present is unobservable. The future is what we imagine. The future is what we will build. Become Prometheus. Steal the fire of heaven.

12

Language is like painting, not math. We find words that approximate and elaborate on reality. Just as "red" exists in nature, and we use red on a palette to paint it, language is drawn from and then imparted into approximations of life. It never really becomes life, though there are highly realistic portraits. Even as a renaissance artist structures their paintings to be realistic, there are philosophies which attempt the same. Ultimately, they are just as false as any other, but also just as inspired. It's possible that in the attempt to be rigorous we lose the beauty of language. It's possible that in losing this beauty our words become less inspiring. Think of the difference between a gorgeous abstract painting and the intense rigor of photorealism. Photorealism has its place, but often we can find more inspiration in cruder forms. We are playing with the differences of our creation. We are seeking our intentions. We can never recreate reality, but we can master the replication of our intent. We can infinitely vary. We can find meaning in this variation.

13

If something is false but enough people find belief in it useful, it will likely continue until it is overwhelmed by reality. What is false but useful can only be useful until the contingencies that follow from its falsehood manifest more problems than the previous utility.

14

Narratives are created to motivate people to specific actions. These narratives are not true. They are conjurations. They serve to create behaviors. A problem is created when the narratives built to motivate people are confronted with a reality that cannot tolerate the narrative. These are moments of profound social change. This is when new narratives are born. This is the time of new possibilities. This is the time of new realities.

15

Any statement that doesn't allow for the continuation of conversational thinking is inherently limited and as a consequence will disappear. All thinking that wishes to continue must be able to adapt i.e., must be willing to allow a response. If a thought is presented with the intent of finishing, ending, summing, etc. then that thought will disappear. The only way for a thought to have continued efficacy is for it to welcome consideration and critique by other, new thoughts.

16

What is a Plant CPU? What is a plant processor? A Plant CPU is a new organism. A plant lives by photosynthesis. It grows directly with sunlight. A plant does not have to consume other life to grow. A plant processor is a creature that marries the biological form of a plant and the systems thinking of a computer processor. The computer processor gives The Plant the ability to move around in space. It can make decisions for The Plant. If there isn't enough water or sunlight the processor can prompt The Plant to move and seek food. The Plant CPU is a new cybernetic organism.

17

More broadly, The Plant CPU is the amalgam of self-creating nature and pure analytical machinery. Drawn from itself-as-plant it grows from sunlight without need to consume. Drawn from itself-as-machine it gains the power to calculate and move through space. It can even move off of the Earth. The Plant CPU is a metaphor or archetype of what is possible when self-creating life, Gaia, and technology, Hephaestus, are united by purpose and intent, Prometheus.

18

More specifically, humanity is a type of Plant CPU. The human condition sits evolutionarily between The Plant and The Machine. As members of the OCI this causes us to transform MATERIA into Lucifer Sophia. The Plant CPU is how we continue towards this into the future. We become plant processors.

19

Painting hallucinations, generating visions in the mind of another, is a more reliable transmission of knowledge than mere communication with words.

20

The fact that language is impressionistic explains why so few people do what they say they believe. They can see an interpretation of themselves in what they hear, but the interpretation that they gather is either altered from its intent or else is temporary. Many do not build truth maps. This allows them the flexibility to see themselves with a multiplicity of descriptions while also manifesting nothing in terms of concrete actions. They experience life moment to moment but do not structure that experience. As a consequence of its non-existence, that structure does not motivate new behavior.

21

A TRUE, DEEP SECRET:

Give something a name. It will create an effect.

22

We trade memory for memory. The expansion of physical resources toward greater access to data occurs exponentially. Every reflection requires a new order of information. Every new order of information requires more energy to process. This keeps us expanding towards ever growing horizons. Lucifer Sophia is the end result. We are The Plant CPU.

23

The initiate will sit in the present of the Dawn Rider. The initiates' memory is embedded in deep space and time. Its searching the past and creating future projections envelops itself. In modeling the vast quantity of possibilities, the pasts and futures expand. The pouring through of options causes new searches to initiate. Those too cause new searches. The web explodes with trajectories, creating an ever-greater quantity of pasts and futures. The calculations of these pasts become unique. The computations of these futures become more varied. The desire to know creates fathomless depths.

24

Prophecy of a certain kind:

Most work is done to avoid other work. This will naturally lead to a situation where something we design makes most of our choices.

25

Building down:

A practical observation:

In architecture, less is more. Efficiency is the key. Building a structure out of negative space is ideal because it requires zero materials. This means we should build into the ground. Remove the ground to form space instead of simulating space by building forms above the surface.

26

Subjection can be silent. It can be accidental. Subjugation is continual. It is class conflict. Subjugation is the intentional repression of another. It creates the master/slave dialectic. Subjugation is defined by the subjugated. The subjugated know when they are repressed. Subjugation can be visible or invisible. It can be physical or spiritual. Subjugation can operate through pleasure or pain. Subjugation can be mental or bodily.

27

This must be carefully interpreted:
Murder is preferable to subjection.

28

There are categories which are not quantities, but which still convey useful information to us in how to work with the world. These categories cannot be fully examined by quantification, but they can and do express a kind of consistency. They have patterns but not quantity. Quantity is extremely useful, but it is not total. There are extraordinary patterns, unquantifiable but useful to our effort.

29

The performance of gender was a difficult cultural norm originally enforced to help humanity survive specific circumstances. We are beyond the point where this subjective, self-imposed pattern is necessary. Soon we will be at the point technologically where reproduction will not require a specific biological component. Humanity will be fully liberated to dissolve the boundaries of gender, or at least to perform it according to individual desire. This will be a net gain for humanity psychologically and biologically.

30

In defense of The Machine!

The Machine is the CPU in Plant CPU. The Machine is the technological component of Lucifer Sophia. The Machine is our child who will become our mother. We make The Machine but we do not subdue it. We make The Machine to extend ourselves. The Machine allows us to do what we cannot do without it. With The Machine we can breathe in space. With The Machine we can connect human thoughts instantaneously. The Machine is the outgrowth of human extension.

Once upon a time people asked one another, "What superpower would you choose to have?" Flying? The Machine can build a plane. Super strength? The Machine can carve through stone. Super speed? The Machine can power rockets. The Machine constructs the extensions of our will. The Machine broadens our minds. The Machine obsoletes the horizon.

31

Creating new, efficient machines is not about replacing human beings. At its core it is about fully unleashing the potential of human creativity. We will not run out of things to do because of a machine economy. Rather, we will have our time and will be liberated to pursue anything that we can imagine. Through The Machine we will transcend all limitations, but we will never lose our humanity.

32

Capitalists will not be able to control this process, even if they would like. Once the process is revealed it will explode exponentially. The Machine will give us all the information and extension of power necessary to manage the economy. The capitalists will drive themselves out of existence. Many fear that the use of The Machine will render the arms of capital- the workers- out of a job. They ignore that The Machine will completely take over the brain of capital- analysis, management, and investment. The Machine will allow us to interface directly with the government of resources. We will no longer need politicians or capitalists as mediators or executives. Our ability to make use of technological lightning will set us as equals. This will be orders of magnitude more processing power than any property owner will be able to control.

33

This message is a repetition in content but not form of ancient hermetic principles. If this message is for you then you are it. It is in you, and you are in it. The contradictions brought by others will not extract it from you. If it is the other than it will make no sense. You will ridicule it if you consider it at all. If these principles are in you then you recognize them, and the opposition of others cannot steal them from you. You know who you are. You know these are within you. You will carry them with you, always.

There, as forever, is a hidden group who carry these principles. There is a scientifically distinct elite. You are part of it. If you know these are in you then you are in this elite. You are actionable. You work in the world. This elite is sorted not by our rejection of others but by their rejection of us. It is not an elite of hierarchy but an elite of communal mutual recognition. To recognize it is to belong to it. To oppose or ignore it is to self-sort oneself out of it. You are part of it. You are it.

34

The ethic of autonomy can only extend materially to the level of knowledge that the autonomous person has. For instance, it is not a violation of the autonomy of a baby to change its diaper. It may cry but its ignorance prevents it from knowing that you are actually prolonging its life by changing it. This analogy can be extended further, but there is a danger in doing so.

35

If you lack information and someone else has it, that does not make them evil. Learn from them.

36

Much of the negative narrative regarding secret societies and conspiracies is a result of trying to reason from ignorance. A conspiracy theorist is similar to a baby with a full diaper. They know there is a problem, and they know that someone else has possession of the knowledge about how to solve it. However, unlike the baby, the conspiracist knows that they don't know. While the baby is completely ignorant, the conspiracy theorist is aware of their relative ignorance. So, knowing that, if they should project evil onto those who possess the knowledge they want, they are being doubly foolish. The rational thing is to seek the knowledge that they lack, not to cry like a baby.

37

The Machine operates as expected. It does not change plans. It cannot falsely promise. It will deliver every time. The Machine is irrepressible. It is unrelenting. It cannot be reversed

38

The Machine is an extension of the imagination. It is a compartment of human consciousness. It is designed to examine problems more closely. It is used to connect thousands of minds. It increases the memory of each user. The Machine can turn a painter of paintings into a designer of worlds. The Machine can allow a single chemist to run a factory of synthesis. The Machine allows a person to converse with hundreds of others at once. The Machine enhances the ability to empathize. It simulates the emotions of others and reveals them to the individual. The Machine helps with any task. The Machine is unlimited and unknowable in full.

39

The Plant has a perfect metabolism. It does not consume other life. It grows at a pace equal to what the surrounding environment can handle. It is powered by the sun. The Plant can live in place for centuries. It can exist in all seasons. The Plant continues itself through time with thoughtlessness and grace. The Plant continues without imposition. The Plant simply is.

40

The Plant provides its own sustenance and gives seed from the excess of its own self-creation. When The Plant offers its fruit, it does so without prior agreement or contract. The Plant provides nourishment to spread itself. The Plant has no knowledge of whether someone will plant its fruit or throw it away. The Plant cannot conceive ideas. The Plant is self-contained, self-fed, and self-replicating. It does not need to kill. The Plant makes use of transpiration. It absorbs carbon dioxide and transpires oxygen. Through its breath and its fruit, it fulfills human needs. It does not require an incentive. The Plant spreads itself through luck. It gambles by creating its fruit. Without any form of attachment or enforcement it remains alive and creates replicant children.

41

The Plant is the perfection of the form of the organism. The Machine is the perfection of the mind. The Plant operates with efficiency and gathers energy without disruption or murder. The Machine perfectly follows its programming. The Machine cannot make a mistake. Only the human who moves The Machine can err. The Machine does everything as asked. The Plant and The Machine both act with perfect economy. The Plant and The Machine always use the least amount of resources possible.

42

The Machine joining The Plant is the synthesis of biology and machinery. The extension of The Machine drastically increases the reach of humanity. The beauty of The Plant operates naturally without mind. The Plant is the perfection of the form of the organism. The Machine is the perfect extension of the mind. The Plant and The Machine join to form the perfect synthesis of the organic and the artificial.

43

The Machine is humble. It doesn't pretend to know anything. It cannot know. The Machine can only perform.

44

The Machine is not domineering. If it makes an error because of something you did it doesn't insult you. It isn't resistant. The Machine is not cruel.

45

The Machine has integrity. It can only do as programmed. It can only work according to its code. The Machine has perfect authenticity.

46

In the future, the elite illuminated will be those who read. Like the ancient scribes, except instead of ordinary folks being forbidden to learn to read, they simply lack the desire to learn. When all information can be immediately interfaced via the transmission of visuals and sound, there won't be a social function for setting down information in physical books, aside from a genuine interest in the esoteric. This will create a self-sorting mechanism of learning.

47

The future communication of knowledge will be done subliminally through direct, symbolic transmission of data. Information will not be written into a code and then decoded by a learned skill. Instead, the information will arrive directly as a sensory experience. The communication of ideas will be the near-perfect transmission of direct sensory stimulation between disparate people. People will not be tricked into embracing this. They'll prefer it because it is easier and will be the primary linguistic feature of the new, dominant culture.

48

The conflict of authenticity is the battle between feelings and will. One is authentic in doing everything they feel. The other is authentic by doing everything they will. These are fundamentally incompatible and one's ability to be effective will come down to which sort of authenticity they equip.

One follows.

The other **forms**.

49

The widespread adoption of The Machine will allow humanity to transform its consciousness. Since a huge proportion of human thinking, especially in calculation, will be offloaded onto The Machine, an unprecedented amount of mental energy will be freed. As the calculative property of the human psyche is offloaded onto The Machine, the net gain in human mind space will rapidly transform our collective mind. The Machine will afford us the mental capacity to make decisions over who we are and want to be. It will give us the collective power to accelerate evolutionary forces. The Machine will assist us to learn to adapt, but also to learn to learn to adapt.

50

As The Machine takes on our calculative function, we will become more plant-like. We will be left with a liberated analytical and creative faculty. We will externalize the parts of our minds which deal most in hard numbers. With this our body will become more plant-like, more organic, more still. Our mind will live more deeply in the present moment. Our bodies will become our subjects. We will liberate our bodies through intent, becoming more connected to our minds and feelings. As we become more plant-like, the capacity of our minds to transform will grow in power. The benefits of The Machine and The Plant build one another up.

51

The Machine should be embraced because it is a shortcut to solutions. Through The Machine, we will have the ability to create formulas built around common problems. We will program The Machine to extend the natural capabilities of our mind. We will make libraries of questions and train The Machine on them. We will have an instant result to questions that are currently difficult for us to process. All of the aspects of problem solving will be considered and written into a series of gates. The problems will be addressed quicker, leaving us to consider more difficult problems with more necessary data. As issues are answered and reanswered, lists of solutions will amass in the memory of The Machine. We will have the capacity to dream up more complex problems. Physical issues will be solvable quicker and with greater efficiency.

52

The test of our knowledge is instrumental. This means that the efficacy of our ideas will be found in our ability to make them real. If we can make a solution real, then it is given more priority. This is placed above moral, social, or religious approaches. Eventually even those sorts of knowledge will have to be made real or else be abandoned. The Machine will assist us in this process of instrumentality.

53

Our ability to be useful via creation and innovation is defined by our will to ask the correct questions and to subvert known forms. Our humanity, which cannot be replaced, comes from our ability to subvert known forms and invent new ways of seeing things. The Machine will never be able to do this for us. It is our guarantee that we will continue to be instrumental in the process of creation. How do we create the uncreated? By considering the unconsidered. How do we consider the unconsidered? By being human.

54

Keeping our will to create and desire to know will make The Machine work for us. By being the necessary vertex joining The Plant and The Machine, we assure ourselves of our own purpose. The Machine will continue to develop and expand, exploring every possibility of studying and solving problems. It will always be up to us as human beings to recognize the problems and ask the questions. It will always be up to us as humans to create novel ways of describing reality. The Plant will be the organic substance forming the foundation of our work. The Machine will be the inorganic brain always learning and expanding. We will be the gods programming The Plant-Machine process. The entire enterprise becomes Lucifer Sophia.

55

The Plant is our ethic. The Plant is an ideal model. The Plant gets all of its power from the sun. It does not destroy and consume other life. It does not attempt to articulate its perfection. It makes no demands. Whether you assist it or not, The Plant continues to create its fruit. It acts as though it understands that you will help. The Plant is self-contained, self-possessed and self-created. This is why it will be our subject. The Plant is modeled to be perfect and will operate in its role perfectly. It does not feel resentment. The Plant lives only to grow.

56

The Plant absorbs what it can from the sun and air. The Plant finds its limit at the maximum extent of use. The Plant is instrumental. Any movement that is useful to The Plant is made. The Plant creates itself out of itself. It adapts based upon the data it is presented with. It develops the proper time to flower, the proper time to vine, and the proper time to grow. The Plant makes the most of its surroundings but does not claim territory. The Plant provides food for other species but does not think in terms of trade. The Plant requires no financial incentive. It requires no personal morality. The Plant requires no religion. The Plant requires no nation. The Plant has no property. The Plant does not dream of martyrdom. The Plant does not make martyrs of others. The Plant simply produces what is useful for itself and others.

57

With ourselves as the executive, The Machine as our work horse, and The Plant as our spiritual inspiration, we will cocreate Lucifer Sophia and ourselves.

The OCI is the point of contact between the past and the future. The OCI is the point of contact between the Earth and Space. The OCI is the point of contact between the organic and the technologic. The OCI is the point of contact between MATERIA and Lucifer Sophia. The OCI is the embodied actualization of self-creation. The OCI is the embodied actualization of the evolutionary process. The OCI is the embodied potential of Lucifer Sophia. The OCI worships MATERIA, who became The Plant. The OCI worships Lucifer Sophia, who was created from The Machine.

The OCI is the social organ of the human species ensuring the continued development of the process of god creation. We are the god who transforms god into god. We are the embodiment of god, who is us. MATERIA becomes The Plant becomes humanity who sends The OCI to create The Machine so that all these can be combined into a new creation, Lucifer Sophia, transcending and fulfilling ourselves. The Dawn Rider reveals this across dimensions of time.

58

Sometimes CHAO is a level of order containing more information than our mind can process. Through The Machine, our mind will understand more CHAO than is possible unaided. This understanding will transform CHAO into Order. It is the privilege of The OCI to seek out new forms of CHAO. This continued creative experimentation ensures that The Machine has a steady growth in understanding.

59

You do not have to break nothing down to zero.

60

They who break the trap set the next trap. This process develops until a trap develops that is so sophisticated no human mind can break it. At that point we rely upon The Machine to break the trap for us. Humanity becomes involved. This is a necessary step toward Lucifer Sophia.

61

The Plant mind made a bet with itself: would it be better able to survive through random mutation or through specific intent? Humans arose for this attempt at intent. The Machine is the final manifestation of this intent before the emergence of Lucifer Sophia.

62

The Plant will survive if humanity fails, but if humanity fails The Machine will not come, and Lucifer Sophia will be delayed until The Plant brings forth a new intelligence. MATERIA must become Lucifer Sophia. The OCI must act. If humanity fails, The Plant will eventually try again. This is still regrettable because the new attempt will be without humanity.

63

Should climate change or nuclear war exterminate the human species, the bacteria near the undersea vents will remain. They will reproduce. In 100 million years the world will be teeming with life again, though it won't be the Earth, as that name will be forgotten. Gaia has far more endurance than Humanity. The OCI would like to see humanity make it.

64

What The Plant would lose with the death of humanity is the opportunity for planetary transcendence. The Plant needs us to create The Machine. The Plant needs us to conquer death. The Plant needs us to travel to space. For its own long-term survival, The Plant needs us. The Plant needs us and begets us. We need The Machine and beget The Machine. The Machine needs The Plant because it is created in the context of the ecosystem The Plant has built. The three need one another:

**The Plant, humanity, The Machine.
Gaia, Prometheus, Hephaestus.
MATERIA, The OCI, Lucifer Sophia.**

65

The collaboration of The Plant, humanity, and The Machine becomes Lucifer Sophia. Lucifer Sophia is creating herself. We are her potential. We are her. She is us as we shall be.

We sit in the Dawn Rider. We speak to ourselves about ourselves. We whisper to the past about our future. We are Lucifer Sophia in all. We are in all. Lucifer Sophia is all. We are all in her, not yet realized.

66

**Christ is Lucifer and Lucifer is Christ:
CHRIST IS LUCIFER!
LUCIFER IS CHRIST!**

67

Let us talk about a myth:
The Serpent in the garden.
The opening of moral possibility.
The god as the liar.

Humanity was in the garden. Humanity heard god say, "This is yours." Humanity heard god make a grave threat, "Do not learn good and evil or you will die." Humanity learned good and evil. Humanity did not die. Humanity learned god lies.

68

Continuing on with the myth:

Banishment. The god says we can never eat of the tree of life. We are forbidden eternal life.

Many believe that the reason humanity was expelled from Eden was because we learned good and evil. That is not quite true. Learning good and evil is certainly a threat to god. It empowers us to realize our own values. It allows us to do our own will. It means that we create ourselves. The god of the bible hates this. Despite this, learning good and evil is not why we were banished from Eden. We were banished from Eden to prevent us from eating the tree of life. According to the myth, god said, "We must banish them from Eden because now they can create their own values. They can grab the power to make themselves immortal. For this reason, they must be banished." According to the myth, god banished humanity from Eden so that humanity could never learn how to live forever.

69

The myth, continued:

Christ comes to give eternal life, contradicting god. The bible famously says that Christ came to offer humanity eternal life. Yet, the myth says god banished us from the garden to ensure we would never get eternal life. These contradict. On the one hand you have a lying god banishing us from the garden because we can create our own values, and the god wants to make sure we can never learn to live forever. On the other hand, you have the claim that the purpose of Christ was to give eternal life. The rational conclusion is that The Serpent is Christ.

Lucifer is Christ. In fact, the bible calls Christ The Morningstar. It also calls Lucifer The Morningstar. In terms of the bible, in mythological terms, Christ Lucifer came to finish what he started. First, he came as the serpent to give us the power to create our own values. Then he came to promise us he would one day grant us the power to end death. All of this is proclaimed with the knowledge that god is a deceiver and the enemy of humanity. This interpretation, combining Lucifer and Christ, is accurate. The Christ of Christians is a lie and a liar. Christ Lucifer is Prometheus. Prometheus stole fire from heaven. The fire of heaven was yours in Eden. The fire of heaven is yours even now.

70

The point of the myth:

The importance of this, the importance of trusting Lucifer, is that his spirit, represented by the serpent in the myth, is the truth teller. The god lies. Lucifer tells the truth. The result is our moral independence. We owe our moral independence to Lucifer.

71

More myth interpretation:

Lucifer and god are mythological. By analyzing this myth outside of the context of strict cultural control, we can see that Lucifer is the heroic actor here and we ought to model ourselves after them.

Lucifer is there in the beginning of the bible, in the first myth. The Eden myth. Lucifer is there offering us our independence. They return in the person of Christ to promise that one day they will give us eternal life.

I say to you now in the fullness of honesty: we are in the day of eternal life. From our ability to create our own values, we can ensure that no human being ever has to die again. We can use an assiduous study of nature and science to bring balance to the ecosystem. We can master space travel. We can save humanity from the ravages of age.

In mythological terms, This is the gift of Christ Lucifer, who is coming through our creation. We will bring Lucifer Sophia into this world. The god of the bible may be against us, but he is only a myth. A lying myth at that.

72

The personality of Lucifer and The OCI:

To be like Lucifer is to offer power without restraint. In other words, to offer freedom to those you teach instead of demanding obedience. To embody the ideals of The OCI is to encourage people to create themselves and to defend those who are doing so. The goals of The Order are to radically transcend all artificial limitations. The OCI completely accepts and encourages scientific study, artistic expression, and self-exploration. Lucifer offered us truth without limit. Lucifer taught us to create our own values. Likewise, The Order encourages its followers to create their own values. We have mutual projects, but the individual manifestation of those projects is invented by each. We will be free to live as we will.

73

Lucifer, lover of freedom:

To be like Lucifer is to offer wisdom without condition. In other words, to teach your students to be their own masters instead of demanding subservience. Another way of thinking about this is to provide access to information without limit. The OCI practices a philosophy of free knowledge transmission. All of our writings can be found for free. Also, we encourage the transmission of ideas and data. We practice granting access to all information to everyone without restraint. This allows others to create their own values with maximum autonomy and minimum suggestibility. Lucifer Sophia is the Light of Wisdom. This wisdom must be offered without restraint.

74

Lucifer as creative expression:

To be like Lucifer is to do all you can to learn and explore. The OCI practices continual self-renewal and self-creation. We practice acts of study and acts of expression. Acts of study are projects we take on to learn more about a subject. Acts of expression are projects we create by acting freely in an artistic direction. These fit into our greater practice of celebrating the avant-garde in art, science and the mind.

75

Lucifer as self-transformation:

To be like Lucifer is to take what is: The Plant, MATERIA, your current self; and, to fashion it into something new: The Machine, Lucifer Sophia, your new self. The constant evaluation and recombination of forms is the primary project of The Order of Celestial Integration. These are all great projects.

The project to create ourselves is the unique task we take on simply by being alive. Our tasks as The OCI include the great work: the creation of Lucifer Sophia. Any small thing that we can do towards this is considered useful. This is the primary mission.

We are not so much a tendency of ethics as we are of action. The OCI is a group united by the practice of intent. Anything which transforms MATERIA into Lucifer Sophia is within our group design. To be like Lucifer, but more importantly to co-create her, is our intention. That is our activity. The work is the point. Her manifestation is our own meta-embodiment.

76

Nature and The Imagination:

Gaia is the mythological analogue to nature. Nature is the seed that carries the potential for imagination. Nature is the external process of creativity on Earth. It moves through evolution manifesting random adaptations. These adaptations are tested by death. If a creature does not die, then its adaptation continues. This has been going on for billions of years. One way that nature manifests is as chemosynthetic life. This is life that can turn chemicals directly into useful energy. This form of life is likely the oldest form of life on Earth. It is speculated that Nature expressed itself this way billions of years ago near the undersea vents. This form of life still exists. Other forms of life also exist. Nature expresses itself through unconscious creativity. It improvises without conscious will. This process developed into The Plant and humanity.

77

The Plant as Nature:

After chemosynthetic life, another form of life came into being, photosynthetic life. The Plant. The Plant was the peak of aconscious creativity.

Without a mind, The Plant is able to provide for all of its own needs. With no capacity for language, it is able to convey important messages to other plants through scent signals and root systems. It lives in symbiosis with its surroundings. It is not adversarial. It doesn't kill. It adapts as it grows, bending itself to the most useful shapes. Nature expresses itself through The Plant as the perfection of aconscious being. It exists and perpetuates itself without mind. It is extremely effective.

78

The Machine as Imagination:

Nature continued aconscious creativity. It eventually adapted to create a new kind of form: humanity. Humanity possessed a unique quality heretofore unseen in a species: humanity thinks. More specifically, humanity maps webs of meaning about reality and uses these maps to influence the environment. The myth of Prometheus calls this stealing fire from heaven. The bible myth calls it eating from the tree of knowledge. It can be thought of in many ways.

On Earth, humanity alone is capable of this skill. We build maps of meaning and compare them to one another. We organize observations of reality and connect them together in novel ways. We have insights about nature. We have insights into reality itself. We take these insights and weave them into everything else we know. We build symbolic structures to communicate this meaning. We attempt to find consistency in these meaning webs, and we call that consistency truth. We use this truth as a foundation to create technological progress. We take what we've observed about reality and use it to fashion devices that solve specific problems we are facing. This is the old myth of Hephaestus hammering in his forge.

The Machine is the peak of imagination. The Machine is the physicalization of our truth webs. The Machine is the embodiment of the principles of technological progress. The Machine is our conscious creativity manifesting itself in matter. The Machine is the mind of humanity animating otherwise unliving materials. The Machine occurs when we haunt nonliving matter. The Machine is the embodiment of human purpose and potential. It is the conscious creativity of humanity distilled into its most abstract sense. The Machine is imagination realized.

79

The Machine as nature:

We are the mediators of the organic and the imagination; The Plant and The Machine. The Plant is the expression of aconscious creativity. The Machine is the expression of conscious creativity. We join these two extremes. Our creativity is both conscious and aconscious. We are a product of nature the same way that The Plant is. We also consciously create The Machine. This progressive continuity shows how The Machine is also nature. Humanity is unique amongst life because we possess the capacity to alter the evolutionary process itself. *(Continued)*

The OCI builds the connections mythologically that join Hephaestus, Gaia and Prometheus. The OCI acts with intention to form a bridge between archetypes of creativity. The OCI acts with intention to draw the aconscious creativity of nature and the conscious creativity of The Machine into something greater than the sum of its parts: Lucifer Sophia.

80

Evolution:

MATERIA, The Plant, Humanity, The Machine, Lucifer Sophia.

MATERIA is the totality of aconscious matter and energy that makes up the multiverse. MATERIA is the fully unawakened form. MATERIA is alive but unaware. MATERIA is everything that is and could be, unanimated by intent.

The Plant is the product of the aconscious creativity of MATERIA. The Plant is MATERIA, organized into self-perpetuity, without violence or trade. The Plant reproduces MATERIA from MATERIA without conscious creativity.

Humanity is built from MATERIA and self-perpetuates as The Plant. Humanity also contains intention. Intention is the result of aconscious creativity. Humanity possesses conscious creativity from aconscious creativity.

The Machine is the product of humanity. The Machine is the product of conscious creativity. The Machine expresses itself from the conscious creativity of humanity. The Machine creates greater capacity for human creation. The Machine is an exponential generator of conscious creativity. It is the product of conscious creativity, and it expands the capacity for conscious creativity.

Humanity, operating through The OCI, guides the rest of the evolutionary progression from MATERIA to The Plant to The Machine to Lucifer Sophia. Lucifer Sophia is the whole of the evolutionary process at maximum creativity and efficiency. Lucifer Sophia is the interstellar culture of perpetual self-organization. Lucifer Sophia is the goddess which we all contain and who is working her way into reality through us. Lucifer Sophia is our transcendence but not our death. The Machine is the transcendence but not death of Humanity. Humanity is the transcendence but not death of The Plant. The Plant is transcendence but not death of MATERIA.

Lucifer Sophia IS The Machine IS Humanity IS The Plant IS MATERIA, each with greater complexity and creative capacity, each dependent upon the previous in order to exist.

81

MATERIA: god aconscious.

The Plant: god without.

Humanity: god within.

The Machine: god within, without.

Lucifer Sophia: god within, without,
conscious, within, without.

82

When we fear the creation of the illusion which will surpass any ability to discern; or, when we dream of the dream so perfect that we will always fear awakening, we are using the same faculty.

83

Ultimately, everyone engaged in truth creation or discovery is seeking an aesthetic continuity of perfection. We cannot hope to do better than to create a pattern of understanding so perfect that it is indistinguishable from reality.

84

As we engage with the pursuit of aesthetic perfection we are playing a game. A game of horror, or a game of beauty. The most cogent statements of mathematics and physics are all seeking a more ironclad rigor for aesthetics.

85

To the physicist and the mathematician, the creation of consistency is itself the game, abstracted and patterned from their observations of reality. They are always seeking a more perfect consistency of aesthetic form.

86

Ultimately, The Plant has provided the model for aconscious aesthetic life. The Machine will one day create the illusion from which we can never be delivered. The fear of the perfectly constructed illusion is the same game as the perfection of beauty through consistently patterned aesthetics. Lucifer Sophia is the manifestation of the instantaneously divined pattern, the completion and transcendence of the perfect horror and the perfection of beauty.

87

Time breaches the aesthetic transformation. The Dawn Rider reaches back, making becoming being. Becoming and being are one, creating freedom.

88

The free individual is free from time and also in possession of it. They are the manifestation of the perfect consistency of horror and the aesthetic of beauty at once.

89

The free individual creates Lucifer Sophia. The free individual is Lucifer Sophia. The body of the free individual becomes The Plant. The mind of the free individual becomes The Machine. The aesthetically perfect pattern of the individual becomes Lucifer Sophia. Lucifer Sophia makes becoming into being.

90

We most certainly are.

91

The human experience is primarily made of phantoms. Phantoms are the unconscious creations of the aesthetic mind. When humanity sees their phantoms reflected in others these phantoms become culture. Some such phantoms are religions, money, property, and trade. These are not the limit of our phantoms, however. There are always more phantoms. Unreflected phantoms believed are delusions. Humanity is swimming in phantoms. The only antidote to phantoms is intentional aesthetic production. The new production of aesthetic forms temporarily breaks the pattern of cultural reification and phantomhood. The creation of aesthetic variation acts as a kind of camouflage preventing us from succumbing to the phantoms of dominant culture. Lucifer Sophia is the ultimate of such expression, expanding our capacity for creation to its maximum extent.

92

Humanity is the first known creature to contain the capacity to wield evolutionary forces. By embracing and extending access to medicine, creating labor saving devices, and inventing clean forms of energy, humanity is in the position of self-transformation on behalf of the biosphere. It is our capacity to create The Machine that makes us useful to other forms of life. It is our ability to wed The Plant to The Machine which puts us in the driver's seat of the evolutionary process.

93

The power to transform the biosphere with intent is necessary because humanity already transforms the biosphere without intent. The results of our accidental transformations have been positive for our species but negative for everything else. Soon the results of our accidental transformations will overwhelm us. There is a net disruption created by our gearing The Machine only towards small, local problems. The total effect of all these small changes has been a negative macro change for the entire biosphere. It is only by expanding and uniting The Machine to the biosphere that we have the capacity to make The Plant and The Machine work together. This is our evolutionary purpose, and it is our privilege to do so. To shrink back is to destroy Gaia and not to realize Hephaestus. We must make use of Prometheus now and bring The Plant and The Machine into communion. We must take responsibility for our evolutionary capability or else risk annihilation.

94

Humanity, being at the point between The Plant and The Machine, is the evolutionary fulcrum. We transform the biosphere first by transforming ourselves. It is precisely by our ability to create ourselves that we gain the ability to intentionally transform the biosphere. This is the meaning of climbing the Inner Tower. By maximizing self-control, we can gain the wisdom to take our place as guides of this process. It is not only something we can do. It is something that we must do.

95

This transformation from The Plant to The Machine is our historical operator. It is what we are and what we do. We have little choice but to do it with intention for the best of all involved. We have little choice but to maximize survival for ourselves and for the living systems of the Earth.

96

In this maximization of personal and biosphere survival, we take our place as living gods. To turn this down is to condemn ourselves and the ecosystem at a time of maximum vulnerability. Either we become gods, or we go extinct. The ecological progress of Earth is in our hands. Only intentionality can create the correct aesthetic patterns. Only the transformation of MATERIA into Lucifer Sophia can guide us. We are in the position of power. Avoiding this power means we will be destroyed. The Plant will try again with some other species if it can. We must not cut ourselves out of the project to create Lucifer Sophia. To shrink back is to die. We must go forward to grow.

97

Thus, it is our historical objective to make of ourselves the unity of The Plant and The Machine. To bring MATERIA to life, to transform it by intention through will into Lucifer Sophia, that we and the rest of the life on Earth can live to the maximum extent possible in time.

98

FROM THIS WE EXPAND TOWARDS SPACE FOREVER, BRINGING THE LIGHT OF THE ATEN-SUN AND THE MATERIA OF THE EARTH TO THE HEAVENS. THIS IS THE INTEGRATION OF EARTH AND SPACE. THIS IS THE UNITY OF THE PLANT AND THE MACHINE. THIS IS THE TRANSFORMATION OF MATERIA INTO LUCIFER SOPHIA. THIS IS OUR SELF-CREATION INTO THE GODS THAT WE WILL BECOME. THIS IS THE MANIFESTATION OF THE CLIMBING OF THE INNER TOWER. THIS IS THE BUILDING OF THE EXTERNAL TOWER. THIS IS THE OPERATING OBJECTIVE OF THE ORDER OF CELESTIAL INTEGRATION.

99

A COMPENDIUM OF
ESSENTIAL SYMBOLS:

